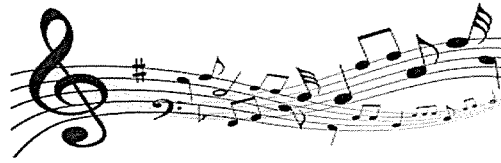




# Jasper Road School Band



[bandatjasperroad@hotmail.com](mailto:bandatjasperroad@hotmail.com)

Thank you for your interest in having your child join the Beginner Band for 2019. Here is some important information regarding the band program.

## Overview of the band program

The Jasper Road Public School Band Program is being offered to all Jasper Road Public School students in Years 3 to 6 during 2019, who show an interest and commitment to learning a musical instrument and being part of a performing ensemble.

The School Band program comprises of three separate bands: Beginner Band, Concert Band and Performance Band. The Beginner Band is the launching point for the band program, teaching them to play their instrument as well as providing the full band experience. Children in Beginner Band attend one small-group tutorial and one whole band rehearsal per week. A professional musician teaches the students to play and care for their instruments at the small-group tutorial. During the band rehearsal, students learn to play in ensemble, combining their parts under the instruction of a professional conductor. After one year of participation in the Beginner Band, musicians progress to the Concert Band. After one year in Concert Band, dedicated students may choose to audition for the Performance Band, where they accept the challenge of more complex music and higher expectations for performance and practice.

In 2018 our award winning bands competed in a number of competitions:

- Beginner Band – received first place at the Hawkesbury Eisteddfod
- Concert Band – will perform at the Hornsby North Band Festival in November
- Performing Band – received second place at the Hawkesbury Eisteddfod and Third place at the NSW State Band Championships

## Band Agreement

All parents are required to sign a Band Agreement at the commencement of band membership. This agreement outlines:

- fees for the band program; and
- responsibilities of students and parents regarding the use and care of school instruments, band shirts and equipment.

Signing this agreement requires the payment of a deposit, equivalent to half of the 2019 Semester 2 band fee. Once the agreement is signed and the deposit paid, the student's position in the band program for 2019 is secured, along with any school instrument hire. Upon signing the band agreement, you acknowledge that you are liable for the cost of the full year's band program. The deposit is **non-refundable**, even if your child does not take up their position in the band during 2019 or leaves before the end of the year.

In addition to band fees, a security bond of \$100 is required from all students. *This bond is reduced to \$50 for students who supply their own instrument.*

The security bond is held in trust by Jasper Road Public School. The process is explained in detail in the Band Agreement. The bond documentation will be made available to parents when instruments are allocated to musicians.

## **2019 Beginner Band fees**

The Band Program is funded entirely by the student membership fees. The fees cover small-group tutorials, conductor for rehearsals and performances, instrument hire, weekend band camp, servicing of instruments, sheet music, and transportation to performances during school days. Every endeavour is made by the committee to minimise the cost to families, through community fund raising activities.

The half-yearly fee for Beginner Band students in 2019 is \$550 for students using a school instrument or \$475 for students supplying their own instrument. Families are invoiced twice yearly, with the first payment due in Term 1 and the second in Term 3. Semester 2 fees are reduced by the amount of the initial deposit paid in Term 4 of the previous year. All band fees must be up to date in order for students to continue with the band program and to attend band camp.

Once a student progress to Concert Band, the Band Fee reduces by \$200 annually. This is due to the changed format of rehearsals. Concert and Performing Band rehearse twice weekly with the whole band and no longer attend small group tutorials. Parents of students in Concert and Performing Bands are strongly encouraged to arrange private tuition for their children once they join the Concert or Performing Band.

## **How is my child's instrument chosen?**

The school has a number of instruments available for loan to students in the band program. Band fees cover the loan of a school instrument, including the annual service fee for school instruments. Students who have their own instrument receive a reduction in their band fees of \$75 per semester, a total saving of \$150 per year. Students in their first two years of the band program are given priority for school loan instruments.

A number of considerations are made when allocating your child an instrument, including:

1. their aptitude for the instrument on trial evening;
2. the optimum balance of instruments required within the band;
3. students' preferences (they will generally receive one of their first *three* choices).

Students playing flutes, clarinets and trumpets are encouraged to purchase their own instruments after their first year in band. It may be possible for students to continue to hire school instruments after this time, but the availability of school instruments for hire depends on the needs of incoming Beginner Band students.

## Responsibilities of band membership

When a student joins the band, they and their parents make a commitment to being part of the band for the entire year. This is part of the Band Agreement. One year is the minimum commitment required to provide your child with a real chance to learn to play their instrument and read music. Regular attendance is required at rehearsal and tutorial sessions, in addition to practise at home. A roll is marked at each rehearsal and repeated absences are addressed by Jasper Road teacher if necessary.

You are responsible for a school-issued instrument and students need to take care of their school instrument (including those used at the school such as drums, percussion, etc). Parents are responsible for the cost of any damage to school instruments.

## Instrument tuition program

Students in Beginner Band will have small group tuition with a specialist tutor and a full band rehearsal with the conductor. All tuition and rehearsal sessions are held out of class-time, either during lunchtime, before, or after school. Times may vary from year to year according to the structure of the group and tutor's availability. Once a student progresses to Concert Band they are strongly encouraged to arrange private tuition on their band instrument to improve their musical skills.

## 2019 Band Camp

Band camp is held once each year. As well as being a lot of fun, the Band Camp provides an opportunity for students to develop their abilities within a concentrated learning environment. Music sessions are interspersed with supervised recreational activities. Participation in this camp is required as a band member, and the cost is included in annual band fees.

The 2019 Band Camp will be held at Crusader's at Galston Gorge on 22<sup>nd</sup> to 23<sup>rd</sup> June 2019. The camp commences on Saturday morning and concludes with a concert for families on the Sunday afternoon. The Band Camp is a highlight of the Band Program for many students.

## Band committee

The Band Program is a sub-committee of the P & C. As such it is a parent organisation run by a group of dedicated volunteers. Being part of the committee is a great way to meet other parents in the school community and contribute to a school program. Without a group of dedicated parent volunteers the school band would not be possible.

Some of the responsibilities of the band committee include:

- Developing rosters of parents to set up, pack up and help supervise band rehearsals.
- Monitoring the band program.
- Coordinating performances, band camp and beginner band selection and orientation.
- Maintaining the music library and preparing music for practice and performance.
- Attending band meetings of band parents about once a month (Monday evenings 7:15pm).

## Band committee annual general meeting

The 2018 AGM will be held on **Monday 3rd December at 7:15pm** in the Cottage (the after school care building behind the school hall). All parents of children in the band program are encouraged to attend. The Jasper Road Band Program is predominantly parent run, so without the support and involvement of band families, the wonderful band program would not be possible. Please consider volunteering.

# The Benefits of Music Education

- Music contributes to students' personal wellbeing through developing self- image, self-confidence, self-esteem, etc.
- 'Music primes the brain for learning'. Musical activity activates and integrates activity across many parts of the brain and this may account for its broad developmental benefits.
- There is special benefit from beginning to learn a musical instrument as a young child. There is a more pervasive effect on the development of the brain (brain plasticity) than with learning that takes place as an adolescent or adult; however, there is still plasticity in the adult brain. Sustained, structured practice with delineated outcomes enhances this plasticity.
- Music contributes to students' cognitive development including abstract thinking, aural and spatial awareness, verbal understanding.
- Music contributes to students' kinetic / motor skill development.
- Although the reasons are not fully understood there is a great deal of evidence to show that there is a correlation between music learning and enhanced abilities in a range of areas:
  - Music contributes to students' rational thinking — reasoning, critical thinking, logistical thinking and interpretive skills
  - Music contributes to learning in other knowledge and skill areas such as numeracy, literacy
  - Music contributes to students' concentration, memory, time management.
- Music contributes to students' creativity when engaged with composing, arranging, improvising tasks which call upon the individual or group to imagine, plan, organise, experiment with and develop sound in an abstract way
- Music through performance and creative experiences provides a means for personal expression, communication, and personal, social and cultural identity formation
- Social cohesion and skills: music connects people through sound, so that there is a sense of physical and emotional camaraderie and shared experience. It is what is most unique about the musical experience. This 'shared sound' leads to a greater sense of communication with others, team cooperation and enhances social confidence
- Music provides the opportunity for aesthetic experiences. An aesthetic knowledge can be described as a deep perceptual understanding in which the senses, the emotions and cognition are combined to make meaning through the experiences of creating, making and interpreting aesthetic forms such as music or paintings.
- In some circumstances, music programs reduce truancy, increase retention of students, build school spirit and reputation.